

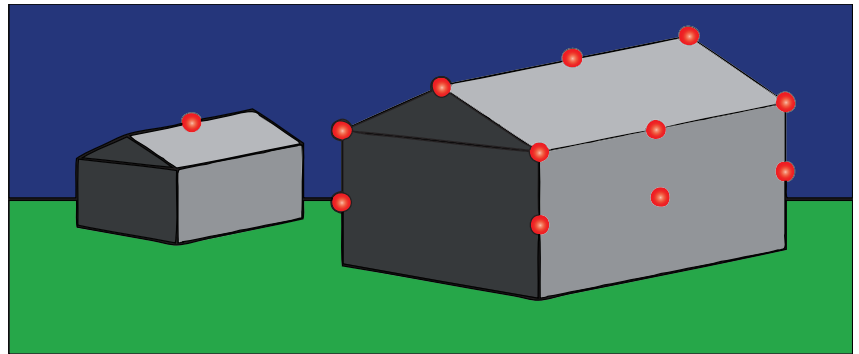
# Low Intensity Obstacle Lights

In recent years, high rise structures, such as high buildings, masts, towers, electricity pylons, wind turbines and cranes have vastly increased. Any tall object such as these should be marked with Obstacle Warning Lights. The use of such lighting is intended to reduce hazards to aircraft by indicating the presence of obstacles.

The presence of objects which must be lit, should be indicated by low, medium or high intensity obstacle lights, or a combination of such lights.

So, where do we need Aircraft Warning Lights?

Fixed obstacles of 45m or less in height, width and length are normally lit by a single, steady red light, placed at the highest practicable point. Obstacles of greater size are normally provided with additional red lights in order to outline the extent of the obstruction, as shown in the diagram.



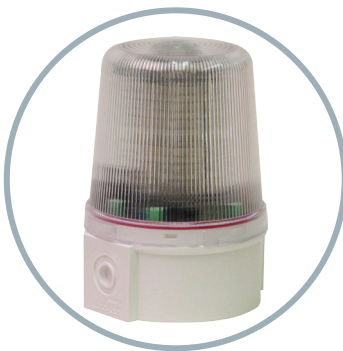
There are two types of Low-intensity obstacle lights, Type A and Type B.

Type A lights have a minimum intensity of 10Cd.

Type B lights have a minimum intensity of 32Cd.

Deegee has designed and manufactured a range of low-intensity warning lights, both Type A and Type B that meet ICAO Annex 14, Chapter 6 requirements for Low Intensity Obstruction Warning. We use LED's for the light source in these beacons, as compared to other light sources such as incandescent or fluorescent, an LED light source is a much more reliable and more beneficial option. LED beacons provide you with energy savings, a longer life span, and provide years of maintenance free operation.

So let's see the range!



Our SBB Beacon (<http://gogo.pm/OXD>) is available in Type A, and is IP66 rated. Carefully designed to minimise dust and dirt build-up, and fully water-tight, Series B is perfectly suited to the outdoor environment. It's 360 degree viewing enclosure uses different LED's from the larger SBG obstruction products, meaning the required brightness levels are met within a much smaller enclosure.

Our SBG Beacon (<http://gogo.pm/SRT>) is available in Type A and Type B and is IP68 rated. Its heavy duty enclosure makes it more suitable for industrial/obstruction use.

