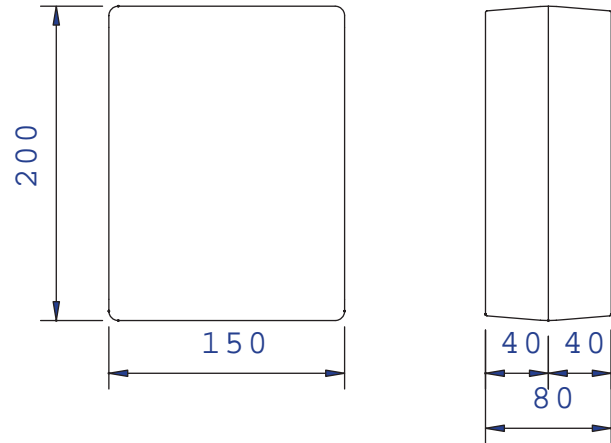
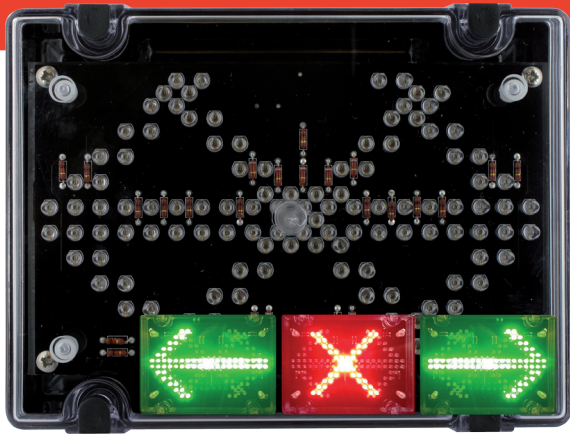


Indicator Panels

IPN/001 - Cross & Arrows



Latest technology Light Emitting Diodes (LEDs) configured into a high-density matrix and ideally suited to a wide variety of applications such as Loading-Bay Signalling, Shutter Door Status, On-Site Traffic Management, Dockside Signalling, Factory Control, etc.

Standard 24Vdc, 115Vac and 230Vac models are available and all units are enclosed in an IP65 UV-stabilised polycarbonate housing (200x150x80mm) for protection against the elements.

Function selection by applying power to relevant terminals with simple four-wire connection for straightforward integration with your system.

Standard unit can show any combination of green-arrow-left, green-arrow-right and red-cross; other colours are available from a choice of Red, Green, Blue or White, available to special quotation/order. Note that both arrows must be the same colour.

		IPN/DC/24/LED/001/R/G	IPN/AC/115/LED/001/R/G	IPN/AC/230/LED/001/R/G
Supply Voltage		24Vdc	115Vac	230Vac
Minimum Supply Voltage		20Vdc	98Vac	195Vac
Maximum Supply Voltage		27Vdc	132Vac	265Vac
Average Current Draw	Red	140mA	56mA	29mA
	Green	104mA	51mA	26mA
Peak Operating Current	Red	140mA	72mA	39mA
	Green	104mA	68mA	35mA
Nominal power consumption	Red	5.9W	5.9W	5.9W
	Green	5.2W	5.2W	5.2W
Luminous Intensity	Red		220Cd	
	Green		560Cd	
Beam Angle	Red		29 degrees	
(FWHMA)	Green		28 degrees	
Angle of max rated brilliance			On axis with front face	
Recommended fuse rating			Internal - 1A TD	
IEC protection class			IP65	
Operating Temperature Range			-20 to +45 Degrees C	
Net Product Weight		660g	1170g	1170g