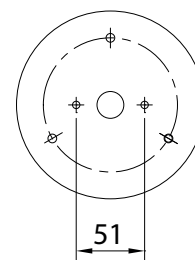
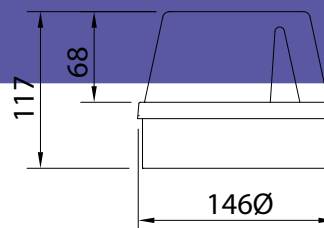




deegee
beaconlamps.com

Sounder Beacons Series ISB-T



114dB (Max) multi-tone sounder with integrated LED beacon.

Compatible with full Series T, U and V ranges to provide a fully customised and integrated signalling solution.

Circuitry is fixed to the lens assembly, with convenient access to the terminal block for wiring, as well as tone selector switch and volume control, allowing easy fitting of bases and wiring during installation, and safe storage of the electronics for phase 2 fitting.

Cap is fastened to the base with a custom gasket and secured by a three screws.

- Dedicated Electronic Sounder/Beacons for general-purpose audible alarm applications.
- 114dB (A) max. IP66 64-tone electronic sounder with internal volume control.
- Each of the 64 tone combinations are selected using an internal DIP-switch array.
- Simple 2-wire connection to energise sounder with second-stage and third-stage tones available on third/fourth wires.
- Product is supplied preconfigured such that beacon and sounder operate together. An internal link and secondary terminals are provided to allow the installer to control the beacon and sounder independently.
- Full range of supply voltages accommodated - 10-30Vdc, 24Vac, 115-230Vuc and 45-65Vac/55-95Vdc units available. (uc = ac or dc)
- Features Black Polycarbonate base with either Red lens (for RED unit) or clear lens (for AMBER/ GREEN/BLUE/WHITE units).
- Supplied with cable gland and anti-condensation breather element.

General

Automotive

Obstruction

Audible

Explosionproof

Accessories



Sounder Beacons Series ISB-T

General

Automotive

Obstruction

Audible

Explosionproof

Accessories

Switch Setting	Tone No	Tone Description	2nd Tone	3rd Tone	dBA @12Vdc	Is 12Vdc (mA)	dBA@ All other Voltages	Is 24Vdc (mA)	Arms 24Vac (mA)	Arms 48Vac (mA)	Arms 115Vac (mA)	Arms 230Vac (mA)
123456												
000000	1	420 INT @ 625mS/625mS (aus evac)	22	55	92	75	95	89	229	86	42	29
100000	2	554/440 ALT @ 0.1S/0.4S	14	51	92	84	96	98	237	93	46	31
010000	3	554/440 ALT @1Hz	3	55	98	86	102	100	240	95	47	31
110000	4	660	4	55	89	92	94	105	246	99	51	33
001000	5	660 INT 1S on/1S off	5	11	88	81	94	92	234	92	46	31
101000	6	660 INT @ 1.8S on/1.8S off	6	55	89	80	94	93	234	92	44	29
011000	7	660 INT @ 6.5S on/13S off	7	26	90	76	94	89	229	88	44	28
111000	8	800/970 ALT	14	25	100	98	104	112	252	103	51	32
000100	9	800/970 ALT @1Sec/1Sec	14	23	102	98	106	112	253	103	52	32
100100	10	800-970 SWEEP @1Hz	14	55	102	97	105	112	252	103	51	32
010100	11	800-970 SWEEP @7Hz	14	55	102	98	105	111	253	103	51	33
110100	12	800-970 SWEEP @50Hz	14	55	102	98	105	112	251	103	52	32
001100	13	800-970-800 SWEEP @1/1Hz	14	24	102	98	106	111	250	103	52	32
101100	14	970	14	11	102	101	106	115	257	106	53	33
011100	15	970 INT @1Hz	14	25	102	85	106	98	238	96	47	30
111100	16	660 INT @ 150mS/150mS	16	55	84	81	88	93	230	93	46	30
000010	17	970 INT 0.5s on / 0.5s off	17	51	97	90	100	96	245	92	47	31
100010	18	970 INT @0.25s ON/1S OFF	14	21	91	76	95	88	226	90	45	29
010010	19	1000 (toxic gas alarm)	21	20	99	100	102	114	255	106	53	33
110010	20	1000 INT @1s/1s (gen alarm)	21	23	98	85	102	98	235	97	48	31
001010	21	1200-500 SWEEP @1Hz (papa)	20	8	97	93	100	106	242	101	51	32
101010	22	2100-1000 SWEEP @ 500mS	23	56	90	1245	95	135	281	119	70	43
011010	23	1600/2100 ALT @250mS/250mS	24	11	92	149	95	157	313	133	87	55
111010	24	1600-2100-1600 SWEEP @ 1s/1s	23	52	93	163	96	171	322	139	95	61
000110	25	2400/2850 ALT	29	30	109	206	112	207	374	164	108	71
100110	26	2400-2850 SWEEP @1Hz	29	20	111	197	113	207	366	163	103	67
010110	27	2400-2850 SWEEP @7Hz	29	55	111	197	113	208	372	167	104	68
110110	28	2400-2850 SWEEP @50Hz	29	55	111	197	113	208	372	169	105	72
001110	29	2850	14	49	112	222	114	220	402	181	119	87
101110	30	2850 INT @1Hz	29	28	111	144	113	152	317	136	81	57
011110	31	2850 INT 0.5s on / 0.5s off	31	55	106	136	109	144	316	141	89	60
111110	32	2850 INT 150ms on / 100mS off	14	13	107	158	110	164	338	148	95	67
000001	33	660 Hz INT @ 150mS/150mS	56	52	84	81	88	93	230	93	46	30
100001	34	660 Hz INT @ 150mS/150mS	56	4	84	81	88	93	230	93	46	30
010001	35	660 Hz INT @ 150mS/150mS	56	46	84	81	88	93	230	93	46	30
110001	36	660 Hz INT @ 150mS/150mS	57	52	84	81	88	93	230	93	46	30
001001	37	660 Hz INT @ 150mS/150mS	57	4	84	81	88	93	230	93	46	30
101001	38	660 Hz INT @ 150mS/150mS	57	46	84	81	88	93	230	93	46	30
011001	39	660 Hz INT @ 150mS/300mS	56	52	83	78	87	89	229	87	46	32
111001	40	660 Hz INT @ 150mS/300mS	56	4	83	78	87	89	229	87	46	32
000101	41	660 Hz INT @ 150mS/300mS	56	46	83	78	87	89	229	87	46	32
100101	42	660 Hz INT @ 150mS/300mS	57	52	83	78	87	89	229	87	46	32
010101	43	660 Hz INT @ 150mS/300mS	57	4	83	78	87	89	229	87	46	32
110101	44	660 Hz INT @ 150mS/300mS	57	46	83	78	87	89	229	87	46	32
001101	45	660 Hz INT @ 6.5S on/13S off	47	48	90	76	94	89	229	88	44	28
101101	46	300 Hz Continuous	8	55	94	79	98	92	228	88	46	32
011101	47	800 Hz INT @ 6.5S on/13S off	56	20	94	78	98	90	228	89	47	33
111101	48	300 Hz INT @ 6.5S on/13S off	51	53	94	73	97	85	221	86	42	29
000011	49	340 Hz Continuous	8	55	90	84	93	93	228	91	45	30
100011	50	440 Hz Continuous	8	55	90	84	93	96	230	94	47	34
010011	51	554 Hz Continuous	22	55	98	89	101	102	242	99	50	33
110011	52	800 Hz Continuous	8	55	95	96	98	109	251	104	57	37
001011	53	1200 Hz Continuous	8	55	87	108	92	121	266	111	64	40
101011	54	2000 Hz Continuous	23	20	94	176	98	179	339	139	101	70
011011	55	2400 Hz Continuous	13	4	107	189	110	202	353	145	103	72
111011	56	800 Hz INT @ 0.8S on/0.8S off	11	27	93	83	97	95	236	98	49	34
000111	57	660 Hz INT @ 0.8S on/0.8S off	56	21	87	82	92	93	231	93	49	34
100111	58	1000 Hz INT @ 1s/1s (gen alarm)	54	21	98	85	102	98	235	97	48	31
010111	59	800-970 Hz SWEEP @ 1Hz	22	26	102	97	105	112	252	103	51	32
110111	60	800 Hz Continuous	20	27	95	96	98	109	251	104	57	37
001111	61	800-970-800 Hz SWEEP @ 1/1Hz	19	32	102	98	106	111	250	103	52	32
101111	62	1000 Hz (toxic gas alarm)	54	29	99	100	102	114	255	106	53	33
011111	63	2400 Hz Continuous	25	27	107	189	110	202	353	145	103	72
111111	64	1600/2100 Hz ALT @ 250mS/250mS	21	29	92	149	95	157	313	133	87	55