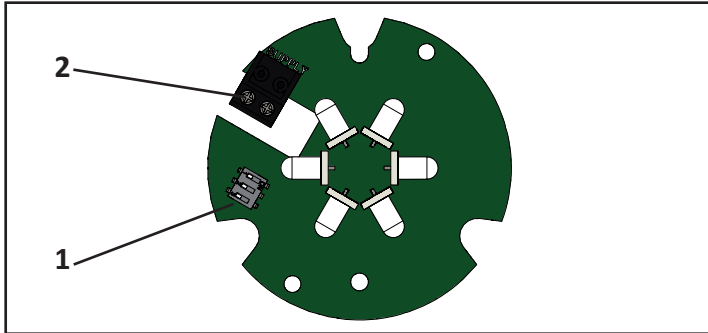
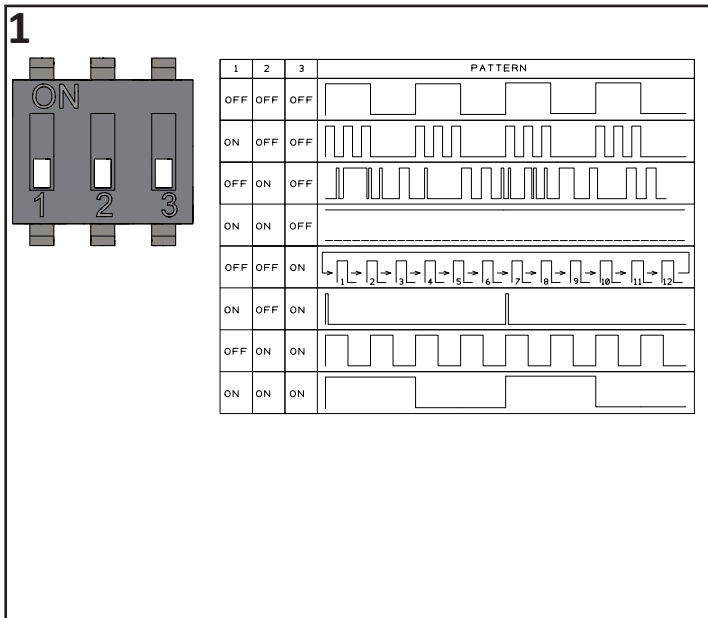


# PSD/LED Multi-Function LED Beacon



**1**



1	2	3	PATTERN
OFF	OFF	OFF	[Pattern 1]
ON	OFF	OFF	[Pattern 2]
OFF	ON	OFF	[Pattern 3]
ON	ON	OFF	[Pattern 4]
OFF	OFF	ON	[Pattern 5]
ON	OFF	ON	[Pattern 6]
OFF	ON	ON	[Pattern 7]
ON	ON	ON	[Pattern 8]

**2**

	PSD/DC/12/	PSD/DC/24/	PSD/UC/115-230/
-ve (0V)	-ve (0V)	-ve (0V)	N
+ve (12Vdc)	+ve (24Vdc)	+ve (24Vdc)	P (98-264Vac/dc)

